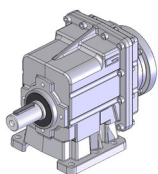


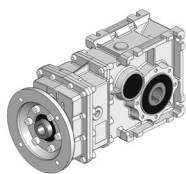
Electric motors  
TS - MY



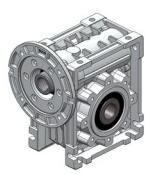
Inverter  
TT100



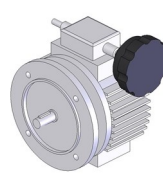
Helical  
gearboxes CMG



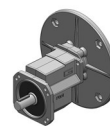
Bevel helical  
gearboxes CMB



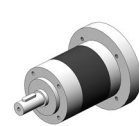
Wormgearboxes CM



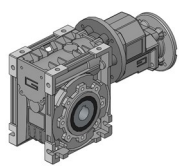
Mechanical  
Variators VAM



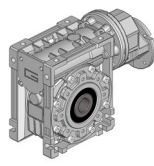
Single stage  
helical gears PU



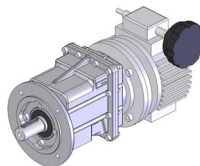
Planetary gear  
units P



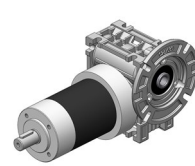
Pre-stage  
wormgearboxes  
CPU



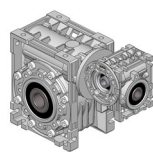
Pre-stage  
gearboxes CMP



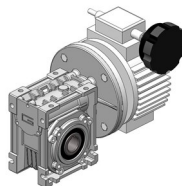
Mechanical variators and  
helical gearboxes CMGV



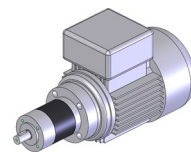
Combination  
gearboxes WMP



Combination  
gearboxes CMM



Mechanical variators and  
wormgearboxes CMV



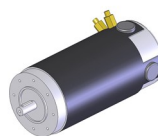
A.C. Planetary  
Gearmotors ACP



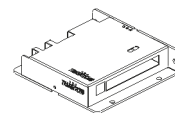
Please, click on these symbols  
to download:  
(Internet connection is required)



Rare earth D.C.  
electric motors ND



Permanent magnets D.C.  
electric motors EC



D.C. motor controls

